

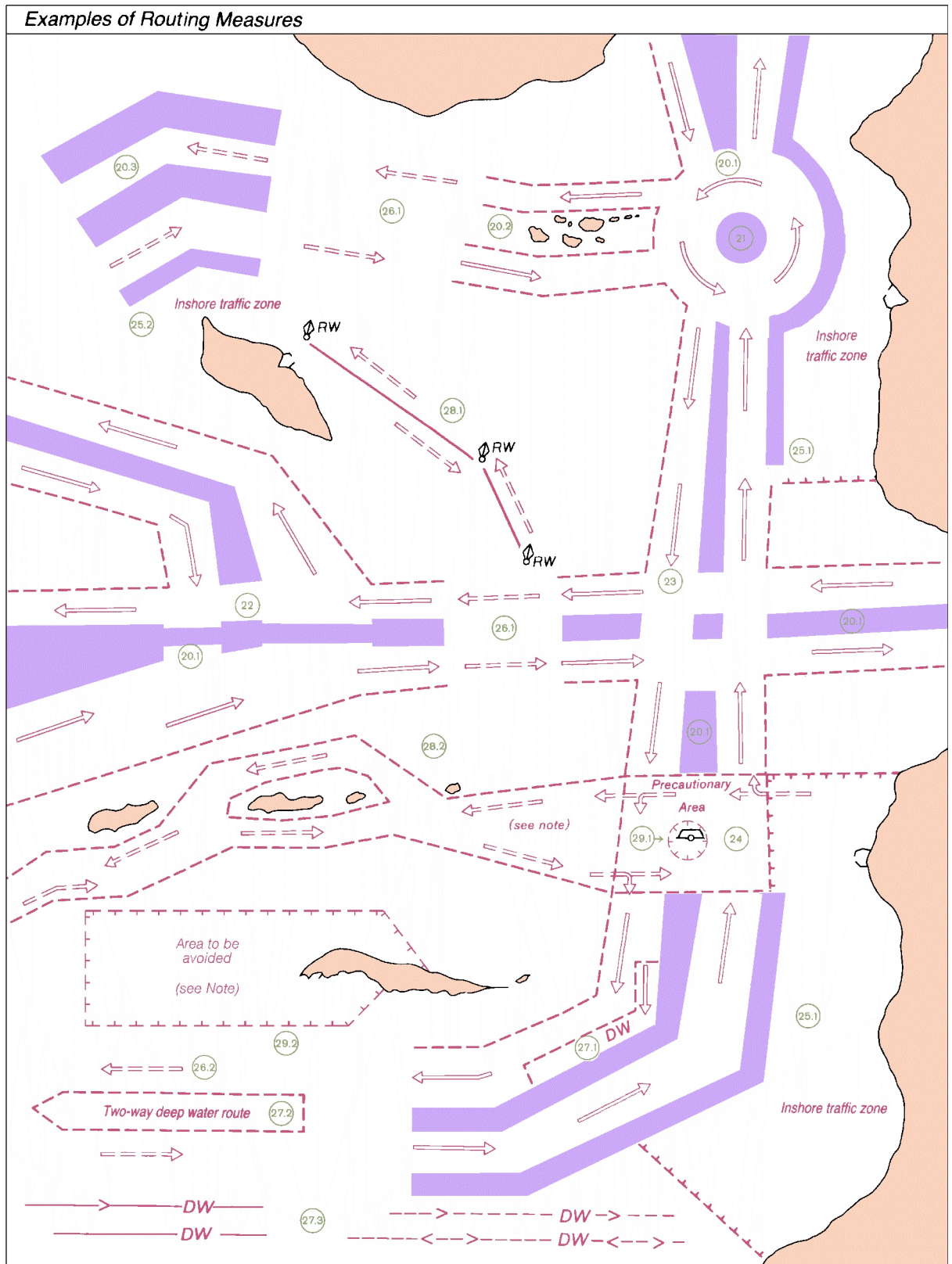
# M Tracks, Routes

Tracks					
Tracks Marked by Lights → P		Leading Beacons → Q		Supplementary national symbols: a – C	
1		Lights in line 090°	Leading line (solid line is fairway)	 2 Bns ≠ 270.5°  2 Bns ≠ 270°30'	
2		Beacons in line 090°	Transit, clearing line	 2 Bns ≠ 270°30'  2 Bns ≠ 270.5°	
3		Lights in line 090°	Recommended track based on a system of fixed marks	2 Bns ≠ 090.5° – 270.5°	
4			Recommended tracks not based on a system of fixed marks	090.5° – 270.5° 	
5.1			One-way track	 	
5.2			Two-way track (including a regulation described in a note)	 SEE NOTE  SEE NOTE	
6		 < 7m >  < 7.3m >	Track, recommended track with maximum authorized draft stated	 < 7.0m >  < 7.3m >	

Routing Measures					
Basic Symbols		Supplementary national symbols: d – e			
10		Established (mandatory) direction of traffic flow			
11		Recommended direction of traffic flow			
12		Separation line			
13		Separation zone			
14	RESTRICTED AREA 	Limit of restricted area			
15		Maritime limit in general			
16	PRECAUTIONARY AREA 	Precautionary area			Precautionary Area

## NOTES

# M Tracks, Routes



# M Tracks, Routes

## Examples of Routing Measures

(20.1)	<i>Traffic separation scheme, traffic separated by separation zone</i>
(20.2)	<i>Traffic separation scheme, traffic separated by natural obstructions</i>
(20.3)	<i>Traffic separation scheme, with outer separation zone, separating traffic using scheme from traffic not using it</i>
(21)	<i>Traffic separation scheme, roundabout</i>
(22)	<i>Traffic separation scheme, with "crossing gates"</i>
(23)	<i>Traffic separation schemes crossing, without designated precautionary area</i>
(24)	<i>Precautionary area</i>
(25.1)	<i>Inshore traffic zone, with defined end-limits</i>
(25.2)	<i>Inshore traffic zone without defined end-limits</i>
(26.1)	<i>Recommended direction of traffic flow, between Traffic separation schemes</i>
(26.2)	<i>Recommended direction of traffic flow, for ships not needing a deep water route</i>
(27.1)	<i>Deep water route, as part of one-way traffic lane</i>
(27.2)	<i>Two-way deep water route, with minimum depth stated</i>
(27.3)	<i>Deep water route, centerline as recommended One-way or Two-way track</i>
(28.1)	<i>Recommended route (often marked by centerline buoys)</i>
(28.2)	<i>Two-way route with one-way sections</i>
(29.1)	<i>Area to be avoided, around navigational aid</i>
(29.2)	<i>Area to be avoided, because of danger of stranding</i>

# M Tracks, Routes

Radar Surveillance Systems					
30			Radar Surveillance Station		
31			Radar range		
32.1			Radar reference line		
32.2			Radar reference line coinciding with a leading line		

Radio Reporting Points			
40		Radio reporting (calling-in or way) points showing direction(s) of vessel movement with designation (if any)	

Ferries			
50		Ferry	
51		Cable Ferry	

Supplementary National Symbols			
a		Recommended track for deep draft vessels (track not defined by fixed marks)	
b		Depth is shown where it has been obtained by the cognizant authority	
c		Alternate course	
d		Established traffic separation scheme: Roundabout	
e		If no separation zone exists, the center of the roundabout is shown by a circle	